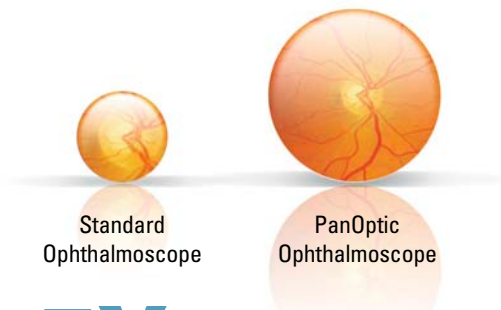




Welch Allyn PanOptic™ Ophthalmoscope

Innovative Optics for Panoramic Views of the Fundus

Developed and patented by Welch Allyn—creator of the world’s first handheld direct-illuminating ophthalmoscope—the PanOptic is a breakthrough concept in ophthalmoscopy. Thanks to an innovative, proprietary optical design known as Axial PointSource™ Optics, the PanOptic will greatly enhance your fundoscopic examinations.



5X LARGER FIELD OF VIEW OF THE FUNDUS

Just look at all that PanOptic offers:

- Fast, easy entry into small, undilated pupils
- 5X larger field of view than you see with standard ophthalmoscopes in an undilated eye
- 25° field of view versus the 5° field of view of standard ophthalmoscopes
- A 26% increase in magnification, making it easier to see retinal details
- Greater distance between practitioner and patient means greater comfort for all
- Complete compatibility with existing Welch Allyn 3.5 V power sources

WelchAllyn®

Advancing Frontline Care™

Revolutionary new technology for a difference you can see

■ Patented Axial PointSource™ Optics:

This proprietary technology makes it easy to enter undilated pupils and provides a 25° field of view, resulting in a view of the fundus that's 5X greater than you see with a standard ophthalmoscope in an undilated eye.

■ Halogen HPX™ Lamp:

Provides whiter, brighter light.

■ Glare Extinguishment System:

Prevents interference from unwanted glare and reflections.

■ Welch Allyn 3.5 V Power Sources:

Compatible with any standard 3.5 V power source including: desk charger handles, convertible battery handles, wall transformers and the Lithium Ion Power Handle.



PanOptic Soft Grip: Ergonomically designed for maximum comfort, balance, and access to controls.

Patient Eyecup: The eyecup establishes and maintains proper viewing distance, provides image stability, serves as a pivoting point for panning around the retina, helps with orientation, and screens out ambient light. The eyecup is cleanable and reusable.

Dynamic Focusing Wheel: Adjusts the focus in a continuous, smooth action for more precise control and optimum view. Available focusing range is -20 to +20 diopters.

Aperture Dial: Allows you to select micro, small, and large spot sizes. Also includes red-free filter and slit aperture. Optional half-moon aperture (11810 only) or cobalt blue filter with add-on magnifying lens (11820 only) for corneal exams.

NEW! WELCH ALLYN
iEXAMINER™



Capture, Store, Send, Retrieve

- Rapid capture of fundus images on your iPhone®* for easy, cost-effective eyeground documentation
- Send images to peers across the continuum of care at a moment's notice
- Easily portable, allowing you to capture images in any clinical environment
- Lower cost solution than traditional equipment for imaging the eye
- Facilitates patient education and compliance

For more information, visit www.welchallyn.com/iexaminer

*Compatible with iPhone 4 and iPhone 4S



71811-MP
Desk Charger Set

76791-2MPX
Integrated
Diagnostic System

PanOptic Ordering Information:

11810 11820

- 3 spot sizes: micro, small and large
- Slit aperture
- Red-free filter
- Half-moon aperture (provides a combination of depth perception and field of view)
- Cobalt blue filter with add-on magnifying lens for corneal examinations (surrogate for Woods Light)

PanOptic Specifications:

Dimensions: 5.12" L x 1.40" W x 3.75" H without eyecup
(with eyecup: 6.57" L)

Weight: .48 lbs without eyecup; .50 lbs with eyecup
Focusing Range: -20 to +20 diopters

Component Information:

- 11840 iExaminer adapter only
- 11870 Reusable Patient Eyecups (package of 5)
- 03800-U Halogen HPX Lamp
- 11875 Corneal Viewing Lens (for use with 11820)
- 05258-M Diagnostic Set Carrying Case (hard)
- 05815-M Diagnostic Set Carrying Case (soft)

For more information on the Welch Allyn PanOptic Ophthalmoscope visit www.panoptic.welchallyn.com or call 1.800.535.6663 opt 3.

4341 State Street Road, PO Box 220, Skaneateles Falls, NY 13153-0220 USA
(p) 800.535.6663 (f) 315.685.2174 www.welchallyn.com

© 2013 Welch Allyn SM2381 Rev C iExaminer is a trademark of Welch Allyn. iPhone is a trademark of Apple®, Inc. registered in the U.S. and other countries.

WelchAllyn®

Advancing Frontline Care™